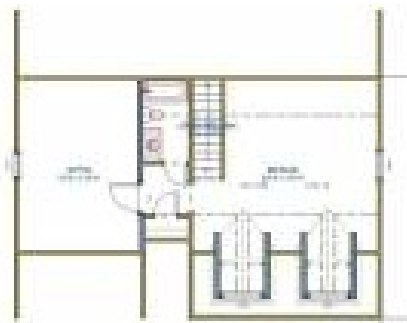


8565 Kensley Ln
Lakeside, TN 37379

THE T GROUP
REAL ESTATE BROKERAGE

Powered by openhouses.timesfreepress.com



\$ 299,700

3 Bedrooms . 2 Bathrooms . 2,065 Sqft

Welcome to Presley Park! A new community nestled in the heart of Lakeside. This charming new neighborhood will offer homes starting at \$270,000 on level lots, with a variety of floor plans by several builders to choose from plus semi-custom options available. The Nichole Floor Plan offers one level living! Enjoy two guest bedroom and shared bath tucked off entry. An open kitchen, living and dining concept with access to covered back porch. And a master suite with private bathroom. There is access to the second level that offers an optional bonus room with full bathroom if ones needs requires additional living space. Don't miss this opportunity to enjoy quality new construction by Rowland Development Group.



Kadi Brown

PHONE

423-667-4498