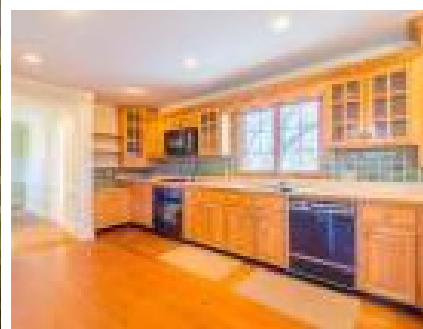


**318 Halifax Farm Ln**  
**Rising Fawn, GA 30738**



Powered by [openhouses.timesfreepress.com](https://openhouses.timesfreepress.com)



**\$ 460,000**

**4 Bedrooms . 2 Bathrooms . 3,254 Sqft**

This custom built home is architecturally and geographically compelling, a veritable gem on the brow. The house was designed by George Fletcher Bennett, a principal architect at Colonial Williamsburg during its development in the 1930's and author of the classic text, *Early Architecture of Delaware* (1932). Planned for his own family, the layout contains colonial and federal elements alongside modern conveniences. The primary living spaces take full advantage of an unparalleled view off of the "brow" of Lookout Mountain, in a contact of serene privacy. The main level features a large eat-in kitchen open to a keeping room, living room with fireplace and built-ins, a separate dining room, a large bedroom and full bath. On the upper level, there is a large master en suite bedroom with generous sized closets and an additional bedroom and full bath. Just off of the back door entrance and through the mud room is a huge bonus room with fabulous natural light, a large loft space (ideal as an office, exercise space or office) and a laundry closet. On the back of the home, a private deck is perfectly situated for ideal enjoyment of the views while entertaining or relaxing and there is plenty of additional level outdoor space for anything you could possibly need, whether hosting an or event or playing games!



**Carlyn Voges**

PHONE

**423-364-4306**