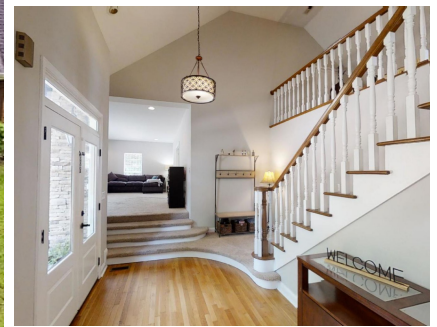


1619 Anderson Pike
Signal Mountain, TN 37377



Powered by openhouses.timesfreepress.com

MLS# 1318542



\$ 575,000

4 Bedrooms . 4.5 Bathrooms . 4,671 Sqft

<https://my.matterport.com/show/?m=719jyDuYfL9&mls=1>

Welcome to The Walden Estate at McCoy Farm Park. This home has it all: Timeless Historic Character, Modern Updates, Open Floor Plan, One Level Living, a Large Lot and a Convenient location. Surrounded on two sides by the McCoy Farm Park, this home has a prominent facade of brick and stone and a HUGE private, fully fenced back yard. The open floor plan, circle drive and ample parking make this home perfect for entertaining. As you would expect, this home is very well appointed with Frigidaire gas range, Frigidare double oven, a new tankless hot water heater, and more. Situated apart from the other bedrooms, the Master suite is open and airy with a huge custom-built master closet and updated master bath with walk in shower, soaker tub and quartz counters with his and hers vanities. Additional bedrooms have large walk in closets and lots of natural light. With a living room, den and a freshly finished man cave, there is plenty of room to spread out and find peace and quiet. In the rear of the home, buyers will love the huge back deck, stamped concrete grilling patio, fire pit and sprawling rear yard. If storage is a concern, this house has you covered with a 4 car garage and over 1000ft² of floored attic.



Matt McDonald

PHONE

423.774.3360